

2000 PLUS®

Pullman & Cosco Classics Band Stamps



MSM Marking Devices 2000-PLUS CATALOG

2014

MAD

IN THE



USA



PULLMAN

- ★ DURABLE
- ★ SPECIAL BANDS AND ASSEMBLES AVAILABLE
- ★ LARGE SELECTION OF SIZES AND STYLES



Pullman & Comet Basics

Cosco Industries has been offering the American Made Pullman Traditional Daters and Numberers and Comet Self-Inking Stamps for over a century.

This unique product offering comes in many styles and configurations. In addition to the many standard Pullman and Comet configurations, Cosco Industries can manufacture many specials.

The charts and information below are designed to aid you in choosing the proper stamp for your needs.

PULLMAN & COMET CODE DEFINITIONS

| CODE | TYPE | FONT | DATER TYPE | DEFINITION | ADDITIONAL INFORMATION |
|-------|-----------------|--------|------------------|---|---|
| AAG | NON SELF-INKING | GOTHIC | N/A | ALPHA NUMERIC GOTHIC | A-Z AND 0-9 ON EACH BAND |
| AAR | NON SELF-INKING | ROMAN | N/A | ALPHA NUMERIC ROMAN | A-Z AND 0-9 ON EACH BAND |
| AG | NON SELF-INKING | GOTHIC | N/A | ALPHA GOTHIC | A-Z OR 0-9 ON EACH BAND |
| AR | NON SELF-INKING | ROMAN | N/A | ALPHA ROMAN | A-Z OR 0-9 ON EACH BAND |
| BFPD | NON SELF-INKING | GOTHIC | FULL DATE | BOLD FACED PULLMAN DATER | LARGE TYPE BOLD FACED DATER |
| BPD | NON SELF-INKING | GOTHIC | FULL DATE | BROOKLYN PULLMAN DATER | TOP AND BOTTOM DIE PLATES |
| BRC | NON SELF-INKING | GOTHIC | FULL DATE | BROOKLYN REVENUE CANCELLER DATER | TOP OR BOTTOM DIE PLATE |
| CAG | SELF-INKING | GOTHIC | N/A | COMET ALPHA GOTHIC | A-Z OR 0-9 ON EACH BAND |
| CAR | SELF-INKING | ROMAN | N/A | COMET ALPHA ROMAN | A-Z OR 0-9 ON EACH BAND |
| CFBD | SELF-INKING | GOTHIC | FULL DATE | COMET FLAT BAND DATER | FULL DIE PLATE DATER |
| CLD | SELF-INKING | GOTHIC | FULL DATE | COMET LINE DATER | DATE STAMP |
| CLN | SELF-INKING | ROMAN | N/A | COMET LINE NUMBERER | NUMBERING STAMP |
| CLXCN | SELF-INKING | GOTHIC | N/A | COMET LINE EXTRA CONDENSED NUMBERING STAMP | NUMBERING STAMP |
| CPL | SELF-INKING | N/A | N/A | COMET PLAIN DIE PLATE SELF-INKER | FULL DIE PLATE WITH CUSHION |
| CVN | SELF-INKING | ROMAN | N/A | COMET VERILARGE NUMBERER | LARGE FONT NUMBERING STAMP |
| CVXCN | SELF-INKING | GOTHIC | N/A | COMET VERILARGE EXTRA CONDENSED NUMBERING STAMP | LARGE FONT NUMBERING STAMP |
| CXCLD | SELF-INKING | GOTHIC | ABBREVIATED YEAR | COMET EXTRA CONDENSED LINE DATER | ABBREVIATED DATE STAMP |
| HOPD | NON SELF-INKING | GOTHIC | FULL DATE | HOTEL PULLMAN DATER | FULL DAY BAND WITH FULL DATE |
| LPN | NON SELF-INKING | ROMAN | N/A | LOCAL PULLMAN NUMBERING STAMP | DIE SPACE TO THE SIDE OF FULL DATE |
| LXCPD | NON SELF-INKING | GOTHIC | ABBREVIATED YEAR | LOCAL EXTRA CONDENSED PULLMAN DATER | DIE SPACE TO THE SIDE OF ABBREVIATED DATE |
| PC | NON SELF-INKING | GOTHIC | FULL DATE | PULLMAN CO-DATER | FULL DATE WITH ALPHA BANDS |
| PD | NON SELF-INKING | GOTHIC | FULL DATE | PULLMAN DATER | DATE STAMP |
| PN | NON SELF-INKING | ROMAN | N/A | PULLMAN NUMBERING STAMP | NUMBERING STAMP |
| RA | NON SELF-INKING | ROMAN | N/A | ROMAN ALPHA | A-Z OR 0-9 ON EACH BAND |
| VFN | NON SELF-INKING | ROMAN | N/A | VERTICAL FILE NUMBERER | VERTICAL NUMBERING STAMP |
| XCPD | NON SELF-INKING | GOTHIC | ABBREVIATED YEAR | EXTRA CONDENSED PULLMAN DATER | DATE STAMP |
| XCPN | NON SELF-INKING | GOTHIC | N/A | EXTRA CONDENSED PULLMAN NUMBERING STAMP | NUMBERING STAMP |



Each Pullman Stamp is handcrafted in the USA

Pullman & Comet Bands

Pullman Traditional Daters and Numberers are manufactured using high quality rubber for the bands. We recommend using water based ink with these bands. When using other industrial inks we recommend our synthetic Buna bands.

Band Configurations

Characters supplied on band and assembly—position of bands contained in stock numbering stamps.

| 4 Band Stamp | 6 Band Stamp | 4 Band Stamp | 6 Band Stamp |
|--------------|--------------|--------------|--------------|
| 1111 | 111111 | 1111 | 111111 |
| 2222 | 222222 | 2222 | 222222 |
| 3333 | 333333 | 3333 | 333333 |
| 4444 | 444444 | 4444 | 444444 |
| 5555 | 555555 | 5555 | 555555 |
| 6666 | 666666 | 6666 | 666666 |
| 7777 | 777777 | 7777 | 777777 |
| 8888 | 888888 | 8888 | 888888 |
| 9999 | 999999 | 9999 | 999999 |
| 0000 | 000000 | 0000 | 000000 |
| # ¼ . ¢ | # ¼ . ¢ ¼ # | # ¼ . ¢ | # ¼ . ¢ ¼ # |
| \$ ½ - # | \$ ½ - # ½ ¢ | \$ ½ - # | \$ ½ - # ½ ¢ |
| X ¾ X / | X ¾ X / ¾ X | X ¾ X / | X ¾ X / ¾ X |

PN layout for sizes #00 thru #4.

XCPN layout for sizes #00 thru #4.

| 4 Band Stamp | 6 Band Stamp | 4 Band Stamp | 6 Band Stamp |
|--------------|--------------|--------------|--------------|
| 1111 | 111111 | 1111 | 111111 |
| 2222 | 222222 | 2222 | 222222 |
| 3333 | 333333 | 3333 | 333333 |
| 4444 | 444444 | 4444 | 444444 |
| 5555 | 555555 | 5555 | 555555 |
| 6666 | 666666 | 6666 | 666666 |
| 7777 | 777777 | 7777 | 777777 |
| 8888 | 888888 | 8888 | 888888 |
| 9999 | 999999 | 9999 | 999999 |
| 0000 | 000000 | 0000 | 000000 |
| \$ ¼ ½ ¢ | \$ ¼ - . ½ ¢ | \$ ¼ ½ ¢ | \$ ¼ - . ½ ¢ |
| # ½ ¾ # | # ½ X / ¾ # | # ½ ¾ # | # ½ X / ¾ # |

Layout for sizes PN-5
Length of frame will accommodate only 12 characters.

Layout for sizes XCPN-5 and XCPN-600
Length of frame will accommodate only 12 characters.

Each Pullman Stamp is handcrafted in the USA



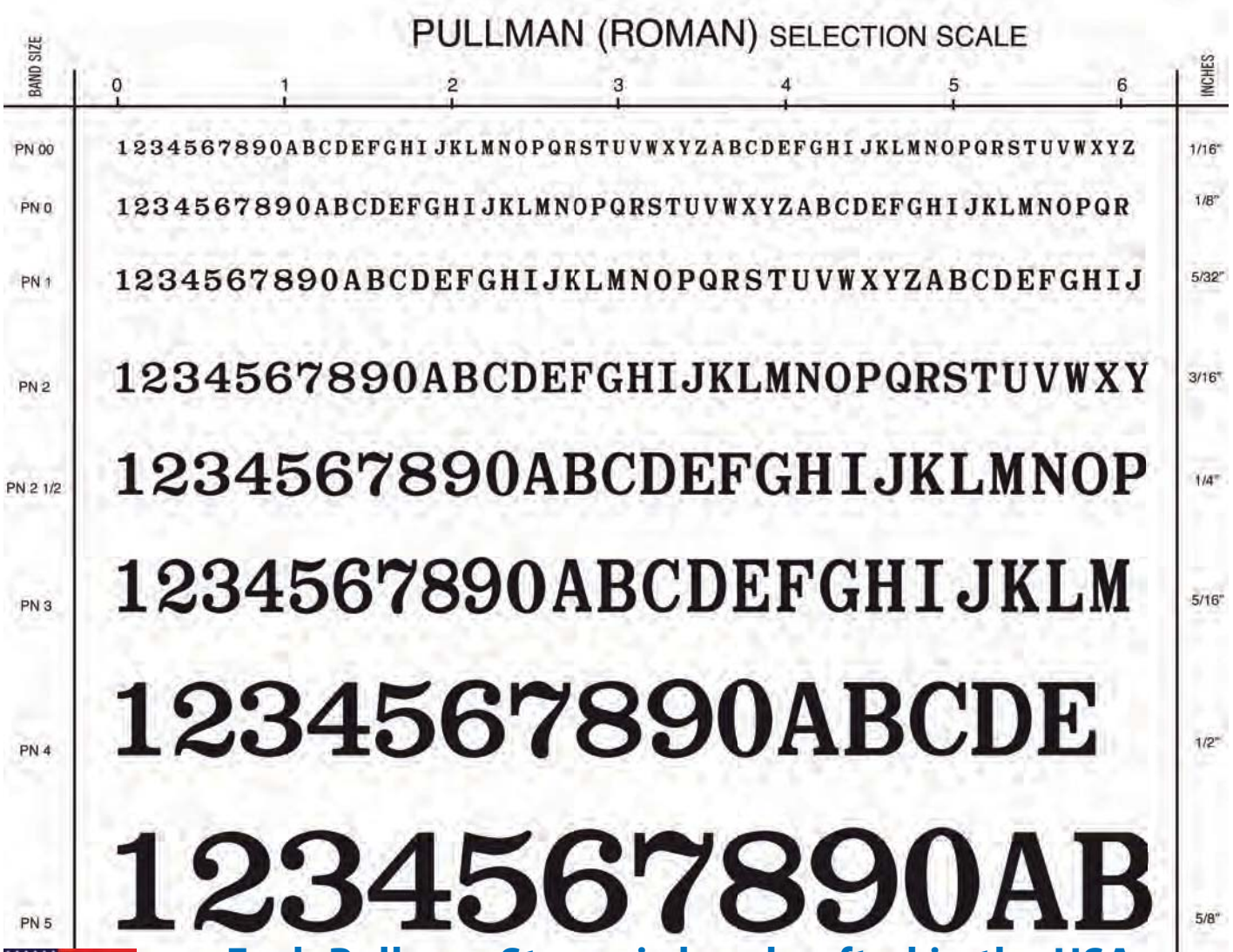


Characters supplied on band and assembly—position of bands contained in stock numbering stamps.

| 4 Band Stamp | 6 Band Stamp |
|--------------|--------------|
| 1111 | 111111 |
| 2222 | 222222 |
| 3333 | 333333 |
| 4444 | 444444 |
| 5555 | 555555 |
| 6666 | 666666 |
| 7777 | 777777 |
| 8888 | 888888 |
| 9999 | 999999 |
| 0000 | 000000 |
| X-X- | X-X-X- |

Layout for sizes XCPN-1000 and XCPN-1200
Length of frame will accommodate only 11 characters.

Pullman & Comet Character Scale Charts



Each Pullman Stamp is handcrafted in the USA

PULLMAN (GOTHIC) SELECTION SCALE

| BAND SIZE | 0 | 1 | 2 | 3 | 4 | 5 | 6 | INCHES |
|------------|---|---|---|---|---|---|---|--------|
| XCPN 00 | 1234567890ABCDEFGHI JKLMNOPQRSTUVWXYZ ABCDEFGHI JKLMNOPQRSTUVWXYZ ABCDEFGHI JKLMNOPQRSTUVWXYZ | | | | | | | 1/16" |
| XCPN 0X | 1234567890ABCDEFGHI JKLMNOPQRSTUVWXYZ ABCDEFGHI JKLMNOPQRSTUVWXYZ ABCDEFGHI JKLMNOP | | | | | | | 3/32" |
| XCPN 0 | 1234567890ABCDEFGHI JKLMNOPQRSTUVWXYZ ABCDEFGHI JKLMNOPQRSTUVWXYZ | | | | | | | 1/8" |
| XCPN 1 | 1234567890ABCDEFGHI JKLMNOPQRSTUVWXYZ ABCDEFGHI JKLMNOPQRSTU | | | | | | | 5/32" |
| XCPN 2 | 1234567890ABCDEFGHI JKLMNOPQRSTUVWXYZ ABCDEFGH | | | | | | | 3/16" |
| XCPN 2 1/2 | 1234567890ABCDEFGHI JKLMOPQRSTUVWXYZ | | | | | | | 1/4" |
| XCPN 3 | 1234567890ABCDEFGHI JKLMNOPQRST | | | | | | | 5/16" |
| XCPN 4 | 1234567890ABCDEFGHI JKLM | | | | | | | 1/2" |
| XCPN 5 | 1234567890ABCDEFG | | | | | | | 5/8" |
| XCPN 600 | 1234567890ABCDE | | | | | | | 3/4" |
| XCPN 1000 | 12345678ABC | | | | | | | 1" |
| XCPN 1200 | 123456ABC | | | | | | | 1 1/4" |

Each Pullman Stamp is handcrafted in the USA





Pullman Line Daters (Full Year) *

| | |
|----------------------|-----------------------------------|
| date sizes available | #0, #1, #1 1/2, #2, #2 1/2, #3 |
| packaging | |

* Custom bands can be ordered on Pullman Daters.

Buna rubber bands are available for use with industrial inks.

Please call for pricing.



APR 12 2014

PD-0

APR 12 2014

PD-1

APR 12 2014

PD-1 1/2

APR 12 2014

PD-2

APR 12 2014

PD-2 1/2

APR 12 2014

PD-3

| Product Code | Description |
|--------------|---------------------|
| 010651 | PD-0 Line Dater |
| 010652 | PD-1 Line Dater |
| 010653 | PD-1 1/2 Line Dater |
| 010654 | PD-2 Line Dater |
| 010655 | PD-2 1/2 Line Dater |
| 010656 | PD-3 Line Dater |

Universal Pullman Daters *

| | |
|----------------------|-------------|
| date sizes available | #1, #1 1/2, |
| packaging | |

Passbook Pullman Daters *

| | |
|----------------------|--------------------|
| date sizes available | #0, #1, #1 1/2, #2 |
| packaging | |

* Custom bands can be ordered on Pullman Daters.

Buna rubber bands are available for use with industrial inks.

Please call for pricing.



10.25'14

UPD-1

12.22.'14

UPD-1 1/2

FEB 11 '14

PBPD-0

FEB 11 '14

PBPD-1

FEB 11 '14

PBPD-1 1/2

FEB 11 '14

PBPD-2

| Product Code | Description |
|--------------|---------------------------|
| 010657 | UPD-1 Universal Dater |
| 010658 | UPD-1 1/2 Universal Dater |
| 010659 | PBPD-0 Passbook Dater |
| 010660 | PBPD-1 Passbook Dater |
| 010661 | PBPD-1 1/2 Passbook Dater |
| 010662 | PBPD-2 Passbook Dater |



Each Pullman Stamp is handcrafted in the USA

Bold Face Pullman Daters*

| | |
|----------------------|--|
| date sizes available | #2, #2 1/2, #3 #4, #5, #6 and 1000 (image not shown) |
| packaging | |

* Custom bands can be ordered on Pullman Daters.

Buna rubber bands are available for use with industrial inks.

Please call for pricing.



MAR 12 2014

BFPD-6

MAR 12 2014

BFPD-5

MAR 12 2014

BFPD-4

MAR 12 2014

BFPD-3

MAR 12 2014

BFPD-2 1/2

MAR 12 2014

BFPD-2

| Product Code | Description |
|--------------|----------------------------------|
| 010663 | BFPD-2 Bold Face Dater |
| 010664 | BFPD-2 1/2 Bold Face Dater |
| 010665 | BFPD-3 Bold Face Dater |
| 010666 | BFPD-4 Bold Face Dater |
| 010667 | BFPD-5 Bold Face Dater |
| 010668 | BFPD-6 Bold Face Dater |
| 010669 | BFPD-1000 Dater Abbreviated Year |
| 010670 | BFPD-1000 Dater Full Year |

Long Ledger Dater

| | |
|----------------------|-----|
| date sizes available | #00 |
| packaging | |

Short Ledger Dater*

| | |
|----------------------|-----|
| date sizes available | #00 |
| packaging | |

* image not shown

Long Frame Ledger Alphabet Dater*

| | |
|----------------------|--|
| date sizes available | #00, includes three alphabet bands A to Z in addition to the regular date bands. |
| packaging | |

* image not shown



JAN 11 '19
LFLD-00

| Product Code | Description |
|--------------|--|
| 010671 | Short Ledger Dater |
| 010672 | LFLD-00 Long Ledger Dater |
| 010673 | LFLAD-00 Ledger Alphabet Dater 12 Year |

Each Pullman Stamp is handcrafted in the USA





Extra Condensed Pullman Line Daters *

| | |
|--|--|
| date sizes available (abbreviated year) | #00, #0, #1, #1 1/2, #2, #2 1/2, #3 |
| packaging | |

* Custom bands can be ordered on Pullman Daters.

Buna rubber bands are available for use with industrial inks.

Please call for pricing.



| Product Code | Description |
|--------------|-------------|
| 010751 | XCPD-00 |
| 010752 | XCPD-0 |
| 010753 | XCPD-1 |
| 010754 | XCPD-1 1/2 |
| 010755 | XCPD-2 |
| 010756 | XCPD-2 1/2 |
| 010757 | XCPD-3 |

Pullman Local Style Daters *

| | |
|----------------------|--------------------|
| date sizes available | #0, #1, #1 1/2, #2 |
| packaging | |
| LPD | full year band |



*The Pullman Local Style Daters can be used to create an impression before, after or in the center of any date assembly. The desired copy or image is placed on the printing bridge with any combination of date, figure, lettering or special bands.

Bridge impression area is 5/16" in height. Impression width area is listed in the pricing table below.

Please call for pricing of custom bands or configurations.

| Product Code | LPD #0 | Die Plate Size |
|--------------|--------------------|-------------------|
| 010552 | LPD NO. 0 X 1 1/4" | 5/16" Die Space |
| 010554 | LPD NO. 0 X 1 1/2" | 9/16" Die Space |
| 010556 | LPD NO. 0 X 1 3/4" | 13/16" Die Space |
| 010557 | LPD NO. 0 X 2" | 1 1/16" Die Space |
| 010558 | LPD NO. 0 X 2 1/4" | 1 5/16" Die Space |
| 010561 | LPD NO. 0 X 3" | 2 1/16" Die Space |
| 010563 | LPD NO. 0 X 4" | 3 1/16" Die Space |



Each Pullman Stamp is handcrafted in the USA

| Product Code | LPD # 1 Date Size | Die Plate Size |
|--------------|--------------------|--------------------|
| 010564 | LPD NO. 1 X 1 1/4" | 3/16" Die Space |
| 010566 | LPD NO. 1 X 1 1/2" | 7/16" Die Space |
| 010568 | LPD NO. 1 X 1 3/4" | 11/16" Die Space |
| 010569 | LPD NO. 1 X 2" | 15/16" Die Space |
| 010571 | LPD NO. 1 X 2 1/2" | 1 7/16" Die Space |
| 010573 | LPD NO. 1 X 3" | 1 15/16" Die Space |
| 010575 | LPD NO. 1 X 4" | 2 15/16" Die Space |

| Product Code | LPD # 1 1/2 Date Size | Die Plate Size |
|--------------|------------------------|--------------------|
| 010576 | LPD NO. 1 1/2 X 1 3/8" | 3/16" Die Space |
| 010577 | LPD NO. 1 1/2 X 1 1/2" | 5/16" Die Space |
| 010578 | LPD NO. 1 1/2 X 1 5/8" | 7/16" Die Space |
| 010579 | LPD NO. 1 1/2 X 1 3/4" | 9/16" Die Space |
| 010580 | LPD NO. 1 1/2 X 2" | 13/16" Die Space |
| 010581 | LPD NO. 1 1/2 X 2 1/4" | 15/16" Die Space |
| 010582 | LPD NO. 1 1/2 X 2 1/2" | 1 5/16" Die Space |
| 010583 | LPD NO. 1 1/2 X 2 3/4" | 1 9/16" Die Space |
| 010584 | LPD NO. 1 1/2 X 3" | 1 15/16" Die Space |
| 010585 | LPD NO. 1 1/2 X 3 5/8" | 2 7/16" Die Space |
| 010586 | LPD NO. 1 1/2 X 4" | 2 13/16" Die Space |

| Product Code | LPD #2 Date Size | Die Plate Size |
|--------------|---------------------|-------------------|
| 010587 | LPD NO. 2 X 1 5/8" | 3/16" Die Space |
| 010589 | LPD NO. 2 X 2" | 9/16" Die Space |
| 010590 | LPD NO. 2 X 2 5/16" | 7/8" Die Space |
| 010591 | LPD NO. 2 X 2 3/4" | 1 5/16" Die Space |
| 010592 | LPD NO. 2 X 3 3/16" | 1 3/4" Die Space |
| 010593 | LPD NO. 2 X 3 7/8" | 2 7/16" Die Space |

| Pullman Local Style Daters * | |
|------------------------------|-----------------------|
| date sizes available | #0, #1, #1 1/2, #2 |
| packaging | |
| LXCPD | abbreviated year band |

PRICE AND AMOUNT O.K. SEP 12 '14

LXCPD-2 X 3 3/16

| Product Code | LXCPD #0 | Die Plate Size |
|--------------|----------------------|-------------------|
| 010418 | LXCPD NO. 0 X 1" | 5/16" Die Space |
| 010420 | LXCPD NO. 0 X 1 1/4" | 9/16" Die Space |
| 010422 | LXCPD NO. 0 X 1 1/2" | 13/16" Die Space |
| 010424 | LXCPD NO. 0 X 1 3/4" | 1 1/16" Die Space |
| 010425 | LXCPD NO. 0 X 2" | 1 5/16" Die Space |
| 010429 | LXCPD NO. 0 X 3" | 2 5/16" Die Space |
| 010431 | LXCPD NO. 0 X 4" | 3 5/16" Die Space |

Each Pullman Stamp is handcrafted in the USA





PULLMAN DATERS & NUMBERERS

| Product Code | LXCPD # 1 Date Size | Die Plate Size |
|--------------|----------------------|-------------------|
| 010432 | LXCPD NO. 1 X 1" | 3/16" Die Space |
| 010434 | LXCPD NO. 1 X 1 1/4" | 7/16" Die Space |
| 010436 | LXCPD NO. 1 X 1 1/2" | 11/16" Die Space |
| 010438 | LXCPD NO. 1 X 1 3/4" | 15/16" Die Space |
| 010439 | LXCPD NO. 1 X 2" | 1 3/16" Die Space |
| 010443 | LXCPD NO. 1 X 3" | 2 3/16" Die Space |
| 010445 | LXCPD NO. 1 X 4" | 3 3/16" Die Space |

| Product Code | LPD # 1 1/2 Date Size | Die Plate Size |
|--------------|--------------------------|--------------------|
| 010447 | LXCPD NO. 1 1/2 X 1 1/4" | 5/16" Die Space |
| 010449 | LXCPD NO. 1 1/2 X 1 1/2" | 9/16" Die Space |
| 010451 | LXCPD NO. 1 1/2 X 1 3/4" | 13/16" Die Space |
| 010452 | LXCPD NO. 1 1/2 X 2" | 1 1/16" Die Space |
| 010453 | LXCPD NO. 1 1/2 X 2 1/4" | 1 5/16" Die Space |
| 010454 | LXCPD NO. 1 1/2 X 2 1/2" | 1 9/16" Die Space |
| 010455 | LXCPD NO. 1 1/2 X 2 3/4" | 1 13/16" Die Space |
| 010456 | LXCPD NO. 1 1/2 X 3" | 2 1/16" Die Space |
| 010458 | LXCPD NO. 1 1/2 X 4" | 3 1/16" Die Space |

| Product Code | LPD #2 Date Size | Die Plate Size |
|--------------|-----------------------|--------------------|
| 010460 | LXCPD NO. 2 X 1 5/8" | 7/16" Die Space |
| 010462 | LXCPD NO. 2 X 2" | 13/16" Die Space |
| 010463 | LXCPD NO. 2 X 2 5/16" | 1 1/8" Die Space |
| 010464 | LXCPD NO. 2 X 2 3/4" | 1 9/16" Die Space |
| 010465 | LXCPD NO. 2 X 3 3/16" | 2" Die Space |
| 010466 | LXCPD NO. 2 X 3 7/8" | 2 11/16" Die Space |

Pullman Double Daters *

| | |
|----------------------|-----------------------|
| date sizes available | #1 1/2 |
| packaging | |
| DDXC | abbreviated year band |
| DDPD | full year band |

*Please call for custom sizes not listed.



APR12'11 TO MAY12'12

DDXC-1 1/2

| Product Code | Description |
|--------------|-------------|
| 010826 | DDXC-1 1/2 |
| 010827 | DDPD-1 1/2 |



Each Pullman Stamp is handcrafted in the USA

A A A JAN 1 2 2012
PC NO. 1 1/2-5

| Pullman Codaters* | |
|---|------------------|
| date sizes available | #0X, #1, #1 1/2 |
| number of alphabet bands (all alphabet bands also contain a dash (-) and a period (.) and are affixed to the date unless otherwise specified.) | -5 = 3 A-Z bands |
| | -6 = 4 A-Z bands |
| | -7 = 5 A-Z bands |
| | -8 = 6 A-Z bands |
| packaging | |



| Product Code | Description |
|--------------|----------------|
| 010951 | PC NO. OX-5 |
| 010952 | PC NO. OX-6 |
| 010953 | PC NO. OX-7 |
| 010954 | PC NO. OX-8 |
| 010955 | PC NO. 1-5 |
| 010956 | PC NO. 1-6 |
| 010957 | PC NO. 1-7 |
| 010958 | PC NO. 1-8 |
| 010959 | PC NO. 1 1/2-5 |
| 010960 | PC NO. 1 1/2-6 |
| 010961 | PC NO. 1 1/2-7 |
| 010962 | PC NO. 1 1/2-8 |

| Pullman Condensed Letter Band Daters | |
|--------------------------------------|--------------------------|
| date sizes available | #1, #1 1/2, #2 |
| number of alphabet bands | 1 A-M band 1 N-Z band |
| packaging | |

JAN 1 2 2012 AN
GPD 1 1/2

| Product Code | Description |
|--------------|--------------|
| 010777 | GPD-1 -AN |
| 010778 | GPD-1 1/2-AN |
| 010779 | GPD-2 -AN |

Each Pullman Stamp is handcrafted in the USA





PULLMAN DATERS & NUMBERERS

Pullman Special Purpose Line Daters *

| | |
|----------------------|--------------------|
| date sizes available | #0, #1, #1 1/2, #2 |
| packaging | |

*These unique Special Line Daters allow the user to choose from many different messages and type styles for their Pullman line dater. See below for all the available specialty stock bands.



THURSDAY

DP-1 1/2 (Day Printers are available upon request.)

SEPTEMBER

MP-2 (Month Printers are available upon request.)

ANS'D APR122015

PD-10

SEP 24 2014 - 9:30 PM

PYHMD-1 1/2

123456 FEB12'15

EXPXC-1 1/2

123456 MAR12'15

EXPXC-2

DUPLICATE APR122014

WPPD-1 1/2

WEDNESDAY APR122014

HoPD-1 1/2

WEDNESDAY APR122014

HoPD-2

Characters on the stock bands used in making combination daters appearing on this page

| Abbr. Day Bands | Day Band | Abbr. Month Band | Month Band | Day Bands | Year Band | Word Band |
|-----------------|-----------|------------------|------------|-----------|-----------|------------|
| Mon | Monday | Jan | January | 11 | 20XX | Shipped |
| Tues | Tuesday | Feb | February | 22 | 20XX | Charged |
| Wed | Wednesday | Mar | March | 33 | 20XX | Cancelled |
| Thu | Thursday | Apr | April | 44 | 20XX | Paid |
| Fri | Friday | May | May | 55 | 20XX | Original |
| Sat | Saturday | Jun | June | 66 | 20XX | Duplicate |
| Sun | Sunday | Jul | July | 77 | Ansd | Triplicate |
| | | Aug | August | 88 | Recd | Entered |
| | | Sep | September | 99 | Entd | Received |
| | | Oct | October | 00 | Paid | Answered |
| | | Nov | November | -- | A.M. | Filed |
| | | Dec | December | xx | P.M. | Packed |

Prefix or Affix Band-Style

| "A" | "B" | "C" |
|--------|--------|--------|
| REC'D | SHIP'D | O.K. |
| ENT'D | FRG'T | INVC'D |
| ANS'D | EXPRS | INVTY |
| PAID | P.Post | VOID |
| SHIP'D | BILLED | ACK'D |
| CHG'D | FILLED | CHG'D |
| BAL | PCK'D | SHIP'D |
| CANC | C.O.D. | RET'D |
| C.O.D. | CHK'D | CANC |
| FILLED | CHG'D | ANS'D |
| FILED | VOID | REC'D |
| RET'D | MAIL | PAID |

| Product Code | Description |
|--------------|--------------------------------------|
| 010880 | HOBFPD-1 1/2 Abbreviated Hotel Dater |
| 010889 | HOPD-0 Hotel Dater |
| 010881 | HOPD-1 Hotel Dater |
| 010882 | HOPD-1 1/2 Hotel Dater |
| 010883 | HOPD-2 Hotel Dater |
| 010884 | HOBFPD-2 Hotel Dater |
| 010885 | HOBFPD-2 1/2 Hotel Dater |
| 010887 | NO. 2 Abbreviated Hotel Dater |
| 010844 | Express Dater 1 1/2 |
| 010845 | Express Dater 2 |
| 010806 | PD-10 Prefix Dater |
| 010933 | PYHMD-1 1/2 |

Pricing for other Pullman Special Purpose Dating Stamps such as Day Printers, Month Printers, and Word Printers are available upon request. Please call for a quote.



Each Pullman Stamp is handcrafted in the USA

Pullman XC Line Numberers *

| | |
|------------------------|--|
| number sizes available | #00, #0X, #0, #1, #2, #2 1/2, #3, #4, #5 |
| packaging | |
| XC = Gothic Style Font | |

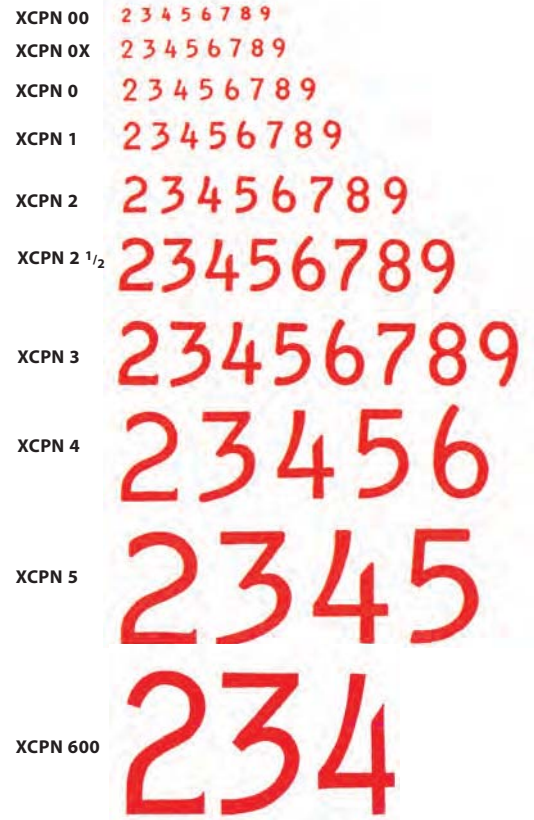
*** Custom bands can be ordered on Pullman Numberers.**

Buna rubber bands are available for use with industrial inks.

Please call for pricing.

XCPN 1-14

type of numberer size number of bands



| Product Code | XCPN 00 |
|--------------|------------|
| 025101 | XCPN 00-2 |
| 025102 | XCPN 00-3 |
| 025103 | XCPN 00-4 |
| 025104 | XCPN 00-5 |
| 025105 | XCPN 00-6 |
| 025106 | XCPN 00-7 |
| 025107 | XCPN 00-8 |
| 025108 | XCPN 00-9 |
| 025109 | XCPN 00-10 |
| 025110 | XCPN 00-11 |
| 025111 | XCPN 00-12 |
| 025112 | XCPN 00-13 |
| 025113 | XCPN 00-14 |
| 025114 | XCPN 00-15 |
| 025115 | XCPN 00-16 |
| 025116 | XCPN 00-17 |
| 025117 | XCPN 00-18 |
| 025118 | XCPN 00-19 |
| 025119 | XCPN 00-20 |
| 025120 | XCPN 00-21 |
| 025121 | XCPN 00-22 |

Each Pullman Stamp is handcrafted in the USA





PULLMAN DATERS & NUMBERERS

| Product Code | XCPN OX |
|--------------|------------|
| 025122 | XCPN 0X-2 |
| 025123 | XCPN 0X-3 |
| 025124 | XCPN 0X-4 |
| 025125 | XCPN 0X-5 |
| 025126 | XCPN 0X-6 |
| 025127 | XCPN 0X-7 |
| 025128 | XCPN 0X-8 |
| 025129 | XCPN 0X-9 |
| 025130 | XCPN 0X-10 |
| 025131 | XCPN 0X-11 |
| 025132 | XCPN 0X-12 |
| 025133 | XCPN 0X-13 |
| 025134 | XCPN 0X-14 |
| 025135 | XCPN 0X-15 |
| 025136 | XCPN 0X-16 |
| 025137 | XCPN 0X-17 |
| 025138 | XCPN 0X-18 |
| 025139 | XCPN 0X-19 |
| 025140 | XCPN 0X-20 |
| 025141 | XCPN 0X-21 |
| 025142 | XCPN 0X-22 |
| Product Code | XCPN O |
| 025143 | XCPN 0-2 |
| 025144 | XCPN 0-3 |
| 025145 | XCPN 0-4 |
| 025146 | XCPN 0-5 |
| 025147 | XCPN 0-6 |
| 025148 | XCPN 0-7 |
| 025149 | XCPN 0-8 |
| 025150 | XCPN 0-9 |
| 025151 | XCPN 0-10 |
| 025152 | XCPN 0-11 |
| 025153 | XCPN 0-12 |
| 025154 | XCPN 0-13 |
| 025155 | XCPN 0-14 |
| 025156 | XCPN 0-15 |
| 025157 | XCPN 0-16 |
| 025158 | XCPN 0-17 |
| 025159 | XCPN 0-18 |
| 025160 | XCPN 0-19 |
| 025161 | XCPN 0-20 |
| 025162 | XCPN 0-21 |
| 025163 | XCPN 0-22 |



Each Pullman Stamp is handcrafted in the USA

| Product Code | XCPN 1 |
|--------------|-----------|
| 025164 | XCPN 1-2 |
| 025165 | XCPN 1-3 |
| 025166 | XCPN 1-4 |
| 025167 | XCPN 1-5 |
| 025168 | XCPN 1-6 |
| 025169 | XCPN 1-7 |
| 025170 | XCPN 1-8 |
| 025171 | XCPN 1-9 |
| 025172 | XCPN 1-10 |
| 025173 | XCPN 1-11 |
| 025174 | XCPN 1-12 |
| 025175 | XCPN 1-13 |
| 025176 | XCPN 1-14 |
| 025177 | XCPN 1-15 |
| 025178 | XCPN 1-16 |
| 025179 | XCPN 1-17 |
| 025180 | XCPN 1-18 |
| 025181 | XCPN 1-19 |
| 025182 | XCPN 1-20 |
| 025183 | XCPN 1-21 |
| 025184 | XCPN 1-22 |
| Product Code | XCPN 2 |
| 025185 | XCPN 2-2 |
| 025186 | XCPN 2-3 |
| 025187 | XCPN 2-4 |
| 025188 | XCPN 2-5 |
| 025189 | XCPN 2-6 |
| 025190 | XCPN 2-7 |
| 025191 | XCPN 2-8 |
| 025192 | XCPN 2-9 |
| 025193 | XCPN 2-10 |
| 025194 | XCPN 2-11 |
| 025195 | XCPN 2-12 |
| 025196 | XCPN 2-13 |
| 025197 | XCPN 2-14 |
| 025198 | XCPN 2-15 |
| 025199 | XCPN 2-16 |
| 025200 | XCPN 2-17 |
| 025201 | XCPN 2-18 |
| 025202 | XCPN 2-19 |
| 025203 | XCPN 2-20 |
| 025204 | XCPN 2-21 |
| 025205 | XCPN 2-22 |

Each Pullman Stamp is handcrafted in the USA





| Product Code | XCPN 2 1/2 |
|--------------|----------------|
| 025206 | XCPN 2 1/2 -2 |
| 025207 | XCPN 2 1/2 -3 |
| 025208 | XCPN 2 1/2 -4 |
| 025209 | XCPN 2 1/2 -5 |
| 025210 | XCPN 2 1/2 -6 |
| 025211 | XCPN 2 1/2 -7 |
| 025212 | XCPN 2 1/2 -8 |
| 025213 | XCPN 2 1/2 -9 |
| 025214 | XCPN 2 1/2 -10 |
| 025215 | XCPN 2 1/2 -11 |
| 025216 | XCPN 2 1/2 -12 |
| 025217 | XCPN 2 1/2 -13 |
| 025218 | XCPN 2 1/2 -14 |
| 025219 | XCPN 2 1/2 -15 |
| 025220 | XCPN 2 1/2 -16 |
| 025221 | XCPN 2 1/2 -17 |
| 025222 | XCPN 2 1/2 -18 |
| 025223 | XCPN 2 1/2 -19 |
| 025224 | XCPN 2 1/2 -20 |
| 025225 | XCPN 2 1/2 -21 |
| Product Code | XCPN 3 |
| 025226 | XCPN 3-2 |
| 025227 | XCPN 3-3 |
| 025228 | XCPN 3-4 |
| 025229 | XCPN 3-5 |
| 025230 | XCPN 3-6 |
| 025231 | XCPN 3-7 |
| 025232 | XCPN 3-8 |
| 025233 | XCPN 3-9 |
| 025234 | XCPN 3-10 |
| 025235 | XCPN 3-11 |
| 025236 | XCPN 3-12 |
| 025237 | XCPN 3-13 |
| 025238 | XCPN 3-14 |
| 025239 | XCPN 3-15 |
| 025240 | XCPN 3-16 |
| 025241 | XCPN 3-17 |
| 025242 | XCPN 3-18 |



Each Pullman Stamp is handcrafted in the USA

| Product Code | XCPN 4 |
|--------------|-----------|
| 025243 | XCPN 4-2 |
| 025244 | XCPN 4-3 |
| 025245 | XCPN 4-4 |
| 025246 | XCPN 4-5 |
| 025247 | XCPN 4-6 |
| 025248 | XCPN 4-7 |
| 025249 | XCPN 4-8 |
| 025250 | XCPN 4-9 |
| 025251 | XCPN 4-10 |
| 025252 | XCPN 4-11 |
| 025253 | XCPN 4-12 |
| 025254 | XCPN 4-13 |
| Product Code | XCPN 5 |
| 025255 | XCPN 5-2 |
| 025256 | XCPN 5-3 |
| 025257 | XCPN 5-4 |
| 025258 | XCPN 5-5 |
| 025259 | XCPN 5-6 |
| 025260 | XCPN 5-7 |
| 025261 | XCPN 5-8 |
| 025262 | XCPN 5-9 |
| 025263 | XCPN 5-10 |
| Product Code | XCPN 600 |
| 025264 | XCPN 602 |
| 025265 | XCPN 603 |
| 025266 | XCPN 604 |
| 025267 | XCPN 605 |
| 025268 | XCPN 606 |
| 025269 | XCPN 607 |
| 025270 | XCPN 608 |
| 025271 | XCPN 609 |
| 025272 | XCPN 610 |
| Product Code | XCPN 1000 |
| 025273 | XCPN 1002 |
| 025274 | XCPN 1003 |
| 025275 | XCPN 1004 |
| 025276 | XCPN 1005 |
| 025277 | XCPN 1006 |
| 025278 | XCPN 1007 |
| 025279 | XCPN 1008 |

Each Pullman Stamp is handcrafted in the USA





| Product Code | XCPN 1200 |
|--------------|-----------|
| 025280 | XCPN 1202 |
| 025281 | XCPN 1203 |
| 025282 | XCPN 1204 |
| 025283 | XCPN 1205 |
| 025284 | XCPN 1206 |
| 025285 | XCPN 1207 |
| 025286 | XCPN 1208 |

Pullman PN Line Numberers *

| | |
|------------------------|-------------------------------------|
| number sizes available | #00, #0, #1, #2, #2 1/2, #3, #4, #5 |
| packaging | |
| PN = Roman Style Font | |

* Custom bands can be ordered on Pullman Numberers.

Buna rubber bands are available for use with industrial inks.

Please call for pricing.

PN 1-14



| | |
|----------|-------------|
| PN 00 | 2 3 4 5 6 7 |
| PN 0 | 2 3 4 5 6 7 |
| PN 1 | 2 3 4 5 6 7 |
| PN 2 | 2 3 4 5 6 7 |
| PN 2 1/2 | 2 3 4 5 6 7 |
| PN 3 | 2 3 4 5 6 7 |
| PN 4 | 2 3 4 5 |
| PN 5 | 2 3 4 |

| Product Code | PN 00 |
|--------------|----------|
| 025401 | PN 00-2 |
| 025402 | PN 00-3 |
| 025403 | PN 00-4 |
| 025404 | PN 00-5 |
| 025405 | PN 00-6 |
| 025406 | PN 00-7 |
| 025407 | PN 00-8 |
| 025408 | PN 00-9 |
| 025409 | PN 00-10 |
| 025410 | PN 00-11 |
| 025411 | PN 00-12 |
| 025412 | PN 00-13 |
| 025413 | PN 00-14 |
| 025414 | PN 00-15 |
| 025415 | PN 00-16 |
| 025416 | PN 00-17 |
| 025417 | PN 00-18 |



Each Pullman Stamp is handcrafted in the USA

Product Code PN 00 Cont.

| | |
|--------|----------|
| 025418 | PN 00-19 |
| 025419 | PN 00-20 |
| 025420 | PN 00-21 |
| 025421 | PN 00-22 |

Product Code PN 0

| | |
|--------|---------|
| 025422 | PN 0-2 |
| 025423 | PN 0-3 |
| 025424 | PN 0-4 |
| 025425 | PN 0-5 |
| 025426 | PN 0-6 |
| 025427 | PN 0-7 |
| 025428 | PN 0-8 |
| 025429 | PN 0-9 |
| 025430 | PN 0-10 |
| 025431 | PN 0-11 |
| 025432 | PN 0-12 |
| 025433 | PN 0-13 |
| 025434 | PN 0-14 |
| 025435 | PN 0-15 |
| 025436 | PN 0-16 |
| 025437 | PN 0-17 |
| 025438 | PN 0-18 |
| 025439 | PN 0-19 |
| 025440 | PN 0-20 |
| 025441 | PN 0-21 |
| 025442 | PN 0-22 |

Product Code PN 1

| | |
|--------|---------|
| 025443 | PN 1-2 |
| 025444 | PN 1-3 |
| 025445 | PN 1-4 |
| 025446 | PN 1-5 |
| 025447 | PN 1-6 |
| 025448 | PN 1-7 |
| 025449 | PN 1-8 |
| 025450 | PN 1-9 |
| 025451 | PN 1-10 |
| 025452 | PN 1-11 |
| 025453 | PN 1-12 |
| 025454 | PN 1-13 |
| 025455 | PN 1-14 |
| 025456 | PN 1-15 |
| 025457 | PN 1-16 |

Each Pullman Stamp is handcrafted in the USA





| Product Code | PN 1 Cont. |
|--------------|------------|
| 025458 | PN 1-17 |
| 025459 | PN 1-18 |
| 025460 | PN 1-19 |
| 025461 | PN 1-20 |
| 025462 | PN 1-21 |
| 025463 | PN 1-22 |

| Product Code | PN 2 |
|--------------|---------|
| 025464 | PN 2-2 |
| 025465 | PN 2-3 |
| 025466 | PN 2-4 |
| 025467 | PN 2-5 |
| 025468 | PN 2-6 |
| 025469 | PN 2-7 |
| 025470 | PN 2-8 |
| 025471 | PN 2-9 |
| 025472 | PN 2-10 |
| 025473 | PN 2-11 |
| 025474 | PN 2-12 |
| 025475 | PN 2-13 |
| 025476 | PN 2-14 |
| 025477 | PN 2-15 |
| 025478 | PN 2-16 |
| 025479 | PN 2-17 |
| 025480 | PN 2-18 |

| Product Code | XCPN 2 1/2 |
|--------------|--------------|
| 025481 | PN 2 1/2 -2 |
| 025482 | PN 2 1/2 -3 |
| 025483 | PN 2 1/2 -4 |
| 025484 | PN 2 1/2 -5 |
| 025485 | PN 2 1/2 -6 |
| 025486 | PN 2 1/2 -7 |
| 025487 | PN 2 1/2 -8 |
| 025488 | PN 2 1/2 -9 |
| 025489 | PN 2 1/2 -10 |
| 025490 | PN 2 1/2 -11 |
| 025491 | PN 2 1/2 -12 |
| 025492 | PN 2 1/2 -13 |
| 025493 | PN 2 1/2 -14 |
| 025494 | PN 2 1/2 -15 |
| 025495 | PN 2 1/2 -16 |



Each Pullman Stamp is handcrafted in the USA

| Product Code | PN 3 |
|--------------|---------|
| 025496 | PN 3-2 |
| 025497 | PN 3-3 |
| 025498 | PN 3-4 |
| 025499 | PN 3-5 |
| 025500 | PN 3-6 |
| 025501 | PN 3-7 |
| 025502 | PN 3-8 |
| 025503 | PN 3-9 |
| 025504 | PN 3-10 |
| 025505 | PN 3-11 |
| 025506 | PN 3-12 |
| 025507 | PN 3-13 |
| 025508 | PN 3-14 |
| Product Code | PN 4 |
| 025509 | PN 4-2 |
| 025510 | PN 4-3 |
| 025511 | PN 4-4 |
| 025512 | PN 4-5 |
| 025513 | PN 4-6 |
| 025514 | PN 4-7 |
| 025515 | PN 4-8 |
| 025516 | PN 4-9 |
| 025517 | PN 4-10 |
| Product Code | PN 5 |
| 025518 | PN 5-2 |
| 025519 | PN 5-3 |
| 025520 | PN 5-4 |
| 025521 | PN 5-5 |
| 025522 | PN 5-6 |
| 025523 | PN 5-7 |
| 025524 | PN 5-8 |

Each Pullman Stamp is handcrafted in the USA





Pullman Vertical File Numberers *

| | |
|------------------------|----------------|
| number sizes available | #2, #2 1/2, #3 |
| packaging | |

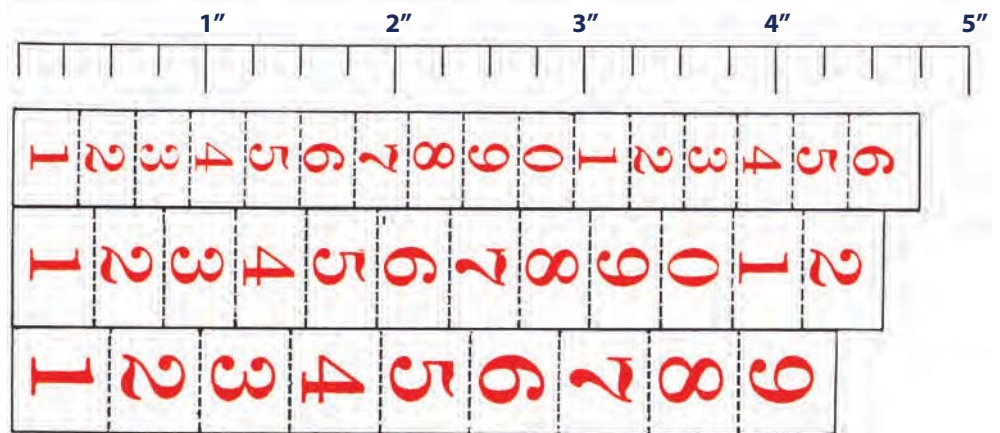
* Custom bands can be ordered on Pullman Vertical Numberers. VFN 1 style can be special ordered

Buna rubber bands are available for use with industrial inks.

Please call for pricing.



VFN 2-14



| Product Code | VFN 2 |
|--------------|----------|
| 025666 | VFN 2-2 |
| 025667 | VFN 2-3 |
| 025668 | VFN 2-4 |
| 025669 | VFN 2-5 |
| 025670 | VFN 2-6 |
| 025671 | VFN 2-7 |
| 025672 | VFN 2-8 |
| 025673 | VFN 2-9 |
| 025674 | VFN 2-10 |
| 025675 | VFN 2-11 |
| 025676 | VFN 2-12 |
| 025677 | VFN 2-13 |
| 025678 | VFN 2-14 |
| 025679 | VFN 2-15 |
| 025680 | VFN 2-16 |



Each Pullman Stamp is handcrafted in the USA

| Product Code | VFN 2 1/2 |
|--------------|---------------|
| 025681 | VFN 2 1/2 -2 |
| 025682 | VFN 2 1/2 -3 |
| 025683 | VFN 2 1/2 -4 |
| 025684 | VFN 2 1/2 -5 |
| 025685 | VFN 2 1/2 -6 |
| 025686 | VFN 2 1/2 -7 |
| 025687 | VFN 2 1/2 -8 |
| 025688 | VFN 2 1/2 -9 |
| 025689 | VFN 2 1/2 -10 |
| 025690 | VFN 2 1/2 -11 |

| Product Code | VFN 3 |
|--------------|---------|
| 025691 | VFN 3-2 |
| 025692 | VFN 3-3 |
| 025693 | VFN 3-4 |
| 025694 | VFN 3-5 |
| 025695 | VFN 3-6 |
| 025696 | VFN 3-7 |
| 025697 | VFN 3-8 |
| 025698 | VFN 3-9 |

Pullman Speedroller

| | |
|----------------------|----------------------------------|
| sizes available | #1 (1 3/16 x 4") #2 (3" x 4") |
| packaging | |
| Roller is 1 3/8 dia. | |



COSCO PRODUCTS
 COSCO PRODUCTS
 COSCO PRODUCTS

#2 (Roller 3" Wide)

| Product Code | Product Description |
|--------------|------------------------------|
| 091131 | NO. 1 1 3/16 X 4 Speedroller |
| 091132 | NO. 2 3 X 4 Speedroller |

| Product Code | Replacement Pads and Rollers |
|--------------|------------------------------|
| 091135 | NO. 1 Pads (SET) |
| 091136 | NO. 2 Pads (SET) |
| 091137 | NO. 1 Roller |
| 091138 | NO. 2 Roller |

Each Pullman Stamp is handcrafted in the USA





PULLMAN DATERS & NUMBERERS

Pullman Alphabet Stamps*

| | |
|---|--|
| figure sizes available | #00, #0X, #0, #1, #2, #2 1/2, #3, #4, #5 |
| packaging | |
| AG = Alphabet Stamp with Gothic Style Font RA = Alphabet Stamp with Roman Style Font | |

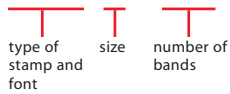
* Additional sizes are available.

Buna rubber bands are available for use with industrial inks.

Please call for additional sizes and pricing.



AG 1-14



Alphabet Stamp with Gothic Style Font

| Product Code | AG 00 |
|--------------|----------|
| 032025 | AG 00-2 |
| 032026 | AG 00-3 |
| 032027 | AG 00-4 |
| 032028 | AG 00-5 |
| 032029 | AG 00-6 |
| 032030 | AG 00-7 |
| 032031 | AG 00-8 |
| 032032 | AG 00-9 |
| 032033 | AG 00-10 |
| 032034 | AG 00-11 |
| 032035 | AG 00-12 |
| 032036 | AG 00-13 |
| 032037 | AG 00-14 |
| 032038 | AG 00-15 |
| 032039 | AG 00-16 |
| 032040 | AG 00-17 |
| 032041 | AG 00-18 |
| 032042 | AG 00-19 |
| 032043 | AG 00-20 |



Each Pullman Stamp is handcrafted in the USA

| SIZES | STYLES | MAX NO. BANDS | SIZE OF CHAR. |
|--------|--------|---------------|---------------|
| AG #00 | ABCDEF | 33 | 1/16" |
| AG #0X | ABCDEF | 33 | 3/32" |
| AG #0 | ABCD | 27 | 1/8" |
| AG #1 | ABCD | 25 | 5/32" |
| RA#00 | ABCD | 28 | 3/32" |
| RA #0 | ABCD | 25 | 1/8" |
| RA #1 | ABC | 18 | 5/32" |
| AR #1 | ABC | 18 | 5/32" |
| RA #2 | AB | 19 | 3/16" |
| AG #2 | PHI | 22 | 3/16" |
| RA #2½ | AB | 17 | 1/4" |
| AG #2½ | CL | 15 | 1/4" |
| RA #3 | AB | 15 | 5/16" |
| AG #3 | TU | 17 | 5/16" |

| BANDS CONTAIN | |
|---------------|----------|
| AG STYLE | RA STYLE |
| A | A |
| B | B |
| C | C |
| D | D |
| E | E |
| F | F |
| G | G |
| H | H |
| I | I |
| J | J |
| K | K |
| L | L |
| M | M |
| N | N |
| O | O |
| P | P |
| Q | Q |
| R | R |
| S | S |
| T | T |
| U | U |
| V | V |
| W | W |
| X | X |
| Y | Y |
| Z | Z |
| . | . |
| - | - |

| Product Code | AG 00 Cont. |
|--------------|-------------|
| 032044 | AG 00-21 |
| 032045 | AG 00-22 |
| 032046 | AG 00-23 |
| 032047 | AG 00-24 |
| Product Code | AG OX |
| 032050 | AG OX-2 |
| 032051 | AG OX-3 |
| 032052 | AG OX-4 |
| 032053 | AG OX-5 |
| 032054 | AG OX-6 |
| 032055 | AG OX-7 |
| 032056 | AG OX-8 |
| 032057 | AG OX-9 |
| 032058 | AG OX-10 |
| 032059 | AG OX-11 |
| 032060 | AG OX-12 |
| 032061 | AG OX-13 |
| 032062 | AG OX-14 |
| 032063 | AG OX-15 |
| 032064 | AG OX-16 |
| 032065 | AG OX-17 |
| 032066 | AG OX-18 |
| 032067 | AG OX-19 |
| 032068 | AG OX-20 |
| 032069 | AG OX-21 |
| 032070 | AG OX-22 |
| 032071 | AG OX-23 |
| 032072 | AG OX-24 |
| Product Code | AG 0 |
| 032001 | AG 0-2 |
| 032002 | AG 0-3 |
| 032003 | AG 0-4 |
| 032004 | AG 0-5 |
| 032005 | AG 0-6 |
| 032006 | AG 0-7 |
| 032007 | AG 0-8 |
| 032008 | AG 0-9 |
| 032009 | AG 0-10 |
| 032010 | AG 0-11 |
| 032011 | AG 0-12 |

Each Pullman Stamp is handcrafted in the USA





PULLMAN DATERS & NUMBERERS

| Product Code | AG 0 Cont. |
|--------------|------------|
| 032012 | AG 0-13 |
| 032013 | AG 0-14 |
| 032014 | AG 0-15 |
| 032015 | AG 0-16 |
| 032016 | AG 0-17 |
| 032017 | AG 0-18 |
| 032018 | AG 0-19 |
| 032019 | AG 0-20 |
| 032020 | AG 0-21 |
| 032021 | AG 0-22 |
| 032022 | AG 0-23 |
| 032023 | AG 0-24 |
| Product Code | AG 1 |
| 032101 | AG 1-2 |
| 032102 | AG 1-3 |
| 032103 | AG 1-4 |
| 032104 | AG 1-5 |
| 032105 | AG 1-6 |
| 032106 | AG 1-7 |
| 032107 | AG 1-8 |
| 032108 | AG 1-9 |
| 032109 | AG 1-10 |
| 032110 | AG 1-11 |
| 032111 | AG 1-12 |
| 032112 | AG 1-13 |
| 032113 | AG 1-14 |
| 032114 | AG 1-15 |
| 032115 | AG 1-16 |
| 032116 | AG 1-17 |
| 032117 | AG 1-18 |
| 032118 | AG 1-19 |
| 032119 | AG 1-20 |
| 032120 | AG 1-21 |
| 032121 | AG 1-22 |
| 032122 | AG 1-23 |
| Product Code | AG 2 |
| 032124 | AG 2-2 |
| 032125 | AG 2-3 |
| 032126 | AG 2-4 |
| 032127 | AG 2-5 |
| 032128 | AG 2-6 |
| 032129 | AG 2-7 |



Each Pullman Stamp is handcrafted in the USA

| Product Code | AG 2 Cont. |
|--------------|------------|
| 032130 | AG 2-8 |
| 032131 | AG 2-9 |
| 032132 | AG 2-10 |
| 032133 | AG 2-11 |
| 032134 | AG 2-12 |
| 032135 | AG 2-13 |
| 032136 | AG 2-14 |
| 032137 | AG 2-15 |
| 032138 | AG 2-16 |
| 032139 | AG 2-17 |
| 032140 | AG 2-18 |
| 032141 | AG 2-19 |
| 032142 | AG 2-20 |
| 032143 | AG 2-21 |
| 032144 | AG 2-22 |
| 032145 | AG 2-23 |
| 032146 | AG 2-24 |

| Product Code | AG 2 1/2 |
|--------------|--------------|
| 032147 | AG 2 1/2 -2 |
| 032148 | AG 2 1/2 -3 |
| 032149 | AG 2 1/2 -4 |
| 032150 | AG 2 1/2 -5 |
| 032151 | AG 2 1/2 -6 |
| 032152 | AG 2 1/2 -7 |
| 032153 | AG 2 1/2 -8 |
| 032154 | AG 2 1/2 -9 |
| 032155 | AG 2 1/2 -10 |
| 032156 | AG 2 1/2 -11 |
| 032157 | AG 2 1/2 -12 |
| 032158 | AG 2 1/2 -13 |
| 032159 | AG 2 1/2 -14 |
| 032160 | AG 2 1/2 -15 |
| 032161 | AG 2 1/2 -16 |
| 032162 | AG 2 1/2 -17 |
| 032163 | AG 2 1/2 -18 |
| 032164 | AG 2 1/2 -19 |
| 032165 | AG 2 1/2 -20 |
| 032166 | AG 2 1/2 -21 |
| 032167 | AG 2 1/2 -22 |

Each Pullman Stamp is handcrafted in the USA





| Product Code | AG 3 |
|--------------|---------|
| 032168 | AG 3-2 |
| 032169 | AG 3-3 |
| 032170 | AG 3-4 |
| 032171 | AG 3-5 |
| 032172 | AG 3-6 |
| 032173 | AG 3-7 |
| 032174 | AG 3-8 |
| 032175 | AG 3-9 |
| 032176 | AG 3-10 |
| 032177 | AG 3-11 |
| 032178 | AG 3-12 |
| 032179 | AG 3-13 |
| 032180 | AG 3-14 |
| 032181 | AG 3-15 |
| 032182 | AG 3-16 |

Alphabet Stamp with Roman Style Font

| Product Code | RA 00 |
|--------------|----------|
| 032455 | RA 00-2 |
| 032456 | RA 00-3 |
| 032457 | RA 00-4 |
| 032458 | RA 00-5 |
| 032459 | RA 00-6 |
| 032460 | RA 00-7 |
| 032461 | RA 00-8 |
| 032462 | RA 00-9 |
| 032463 | RA 00-10 |
| 032464 | RA 00-11 |
| 032465 | RA 00-12 |
| 032466 | RA 00-13 |
| 032467 | RA 00-14 |
| 032468 | RA 00-15 |
| 032469 | RA 00-16 |
| 032470 | RA 00-17 |
| 032471 | RA 00-18 |
| 032472 | RA 00-19 |
| 032473 | RA 00-20 |
| 032474 | RA 00-21 |
| 032475 | RA 00-22 |
| 032476 | RA 00-23 |
| 032477 | RA 00-24 |



Each Pullman Stamp is handcrafted in the USA

| Product Code | RA 0 |
|--------------|---------|
| 032430 | RA 0-2 |
| 032431 | RA 0-3 |
| 032432 | RA 0-4 |
| 032433 | RA 0-5 |
| 032434 | RA 0-6 |
| 032435 | RA 0-7 |
| 032436 | RA 0-8 |
| 032437 | RA 0-9 |
| 032438 | RA 0-10 |
| 032439 | RA 0-11 |
| 032440 | RA 0-12 |
| 032441 | RA 0-13 |
| 032442 | RA 0-14 |
| 032443 | RA 0-15 |
| 032444 | RA 0-16 |
| 032445 | RA 0-17 |
| 032446 | RA 0-18 |
| 032447 | RA 0-19 |
| 032448 | RA 0-20 |
| 032449 | RA 0-21 |
| 032450 | RA 0-22 |
| 032451 | RA 0-23 |
| 032453 | RA 0-24 |
| Product Code | RA 1 |
| 032351 | RA 1-2 |
| 032352 | RA 1-3 |
| 032353 | RA 1-4 |
| 032354 | RA 1-5 |
| 032355 | RA 1-6 |
| 032356 | RA 1-7 |
| 032357 | RA 1-8 |
| 032358 | RA 1-9 |
| 032359 | RA 1-10 |
| 032360 | RA 1-11 |
| 032361 | RA 1-12 |
| 032362 | RA 1-13 |
| 032363 | RA 1-14 |
| 032364 | RA 1-15 |
| 032365 | RA 1-16 |
| 032366 | RA 1-17 |
| 032367 | RA 1-18 |

Each Pullman Stamp is handcrafted in the USA





PULLMAN DATERS & NUMBERERS

| Product Code | RA 2 |
|--------------|---------|
| 032374 | RA 2-2 |
| 032375 | RA 2-3 |
| 032376 | RA 2-4 |
| 032377 | RA 2-5 |
| 032378 | RA 2-6 |
| 032379 | RA 2-7 |
| 032380 | RA 2-8 |
| 032381 | RA 2-9 |
| 032382 | RA 2-10 |
| 032383 | RA 2-11 |
| 032384 | RA 2-12 |
| 032385 | RA 2-13 |
| 032386 | RA 2-14 |
| 032387 | RA 2-15 |
| 032388 | RA 2-16 |
| 032389 | RA 2-17 |
| 032390 | RA 2-18 |
| 032391 | RA 2-19 |

| Product Code | RA 2 1/2 |
|--------------|--------------|
| 032393 | RA 2 1/2 -2 |
| 032394 | RA 2 1/2 -3 |
| 032395 | RA 2 1/2 -4 |
| 032396 | RA 2 1/2 -5 |
| 032397 | RA 2 1/2 -6 |
| 032398 | RA 2 1/2 -7 |
| 032399 | RA 2 1/2 -8 |
| 032401 | RA 2 1/2 -9 |
| 032402 | RA 2 1/2 -10 |
| 032403 | RA 2 1/2 -11 |
| 032404 | RA 2 1/2 -12 |
| 032405 | RA 2 1/2 -13 |
| 032406 | RA 2 1/2 -14 |
| 032407 | RA 2 1/2 -15 |
| 032408 | RA 2 1/2 -16 |
| 032409 | RA 2 1/2 -17 |

| Product Code | RA 3 |
|--------------|--------|
| 032411 | RA 3-2 |
| 032412 | RA 3-3 |
| 032413 | RA 3-4 |
| 032414 | RA 3-5 |
| 032415 | RA 3-6 |
| 032416 | RA 3-7 |



Each Pullman Stamp is handcrafted in the USA

| Product Code | RA 3 Cont. |
|--------------|------------|
| 032417 | RA 3-8 |
| 032418 | RA 3-9 |
| 032419 | RA 3-10 |
| 032420 | RA 3-11 |
| 032421 | RA 3-12 |
| 032422 | RA 3-13 |
| 032423 | RA 3-14 |
| 032424 | RA 3-15 |

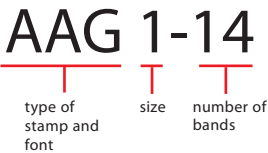
Pullman Alpha-Numeric Stamps*

* Additional sizes are available.

| | |
|---|----------------------------|
| figure sizes available | #0, #1, #2, #2 1/2, #3, |
| packaging | |
| AAG = Alpha-Numeric Stamp with Gothic Style Font AAR = Alpha-Numeric Stamp with Roman Style Font | |

Buna rubber bands are available for use with industrial inks.

Please call for additional sizes and pricing.



| BANDS CONTAIN | |
|---------------|-----------|
| AAG STYLE | AAR STYLE |
| A 1 | A 1 |
| B 2 | B 2 |
| C 3 | C 3 |
| D 4 | D 4 |
| E 5 | E 5 |
| F 6 | F 6 |
| G 7 | G 7 |
| H 8 | H 8 |
| I 9 | I 9 |
| J 0 | J 0 |
| K 1 | K 1 |
| L 2 | L 2 |
| M 3 | M 3 |
| N 4 | N 4 |
| O 5 | O 5 |
| P 6 | P 6 |
| Q 7 | Q 7 |
| R 8 | R 8 |
| S 9 | S 9 |
| T 0 | T 0 |
| U 1/4 | U 1/4 |
| V 1/2 | V 1/2 |
| W 3/4 | W 3/4 |
| X \$ | X \$ |
| Y ¢ | Y ¢ |
| Z . | Z . |
| - | - |
| X | X |

Alpha-Numeral Stamp with Gothic Style Font

| Product Code | AAG 0 |
|--------------|----------|
| 032681 | AAG 0-3 |
| 032682 | AAG 0-4 |
| 032683 | AAG 0-5 |
| 032684 | AAG 0-6 |
| 032685 | AAG 0-7 |
| 032686 | AAG 0-8 |
| 032687 | AAG 0-9 |
| 032688 | AAG 0-10 |
| 032689 | AAG 0-11 |
| 032690 | AAG 0-12 |
| 032691 | AAG 0-13 |
| 032692 | AAG 0-14 |
| 032693 | AAG 0-15 |
| 032694 | AAG 0-16 |
| 032695 | AAG 0-17 |
| 032696 | AAG 0-18 |
| 032697 | AAG 0-19 |
| 032698 | AAG 0-20 |
| 032699 | AAG 0-21 |
| 032700 | AAG 0-22 |

Each Pullman Stamp is handcrafted in the USA





| Product Code | AAG 1 |
|--------------|----------|
| 032701 | AAG 1-3 |
| 032702 | AAG 1-4 |
| 032703 | AAG 1-5 |
| 032704 | AAG 1-6 |
| 032705 | AAG 1-7 |
| 032706 | AAG 1-8 |
| 032707 | AAG 1-9 |
| 032708 | AAG 1-10 |
| 032709 | AAG 1-11 |
| 032710 | AAG 1-12 |
| 032711 | AAG 1-13 |
| 032712 | AAG 1-14 |
| 032713 | AAG 1-15 |
| 032714 | AAG 1-16 |
| 032715 | AAG 1-17 |
| 032716 | AAG 1-18 |
| 032717 | AAG 1-19 |
| 032718 | AAG 1-20 |
| 032719 | AAG 1-21 |
| 032720 | AAG 1-22 |

| Product Code | AAG 2 |
|--------------|----------|
| 032721 | AAG 2-3 |
| 032722 | AAG 2-4 |
| 032723 | AAG 2-5 |
| 032724 | AAG 2-6 |
| 032725 | AAG 2-7 |
| 032726 | AAG 2-8 |
| 032727 | AAG 2-9 |
| 032728 | AAG 2-10 |
| 032729 | AAG 2-11 |
| 032730 | AAG 2-12 |
| 032731 | AAG 2-13 |
| 032732 | AAG 2-14 |
| 032733 | AAG 2-15 |
| 032734 | AAG 2-16 |
| 032735 | AAG 2-17 |
| 032736 | AAG 2-18 |
| 032737 | AAG 2-19 |
| 032738 | AAG 2-20 |



Each Pullman Stamp is handcrafted in the USA

| Product Code | AAG 2 1/2 |
|--------------|---------------|
| 032739 | AAG 2 1/2 -3 |
| 032740 | AAG 2 1/2 -4 |
| 032741 | AAG 2 1/2 -5 |
| 032742 | AAG 2 1/2 -6 |
| 032743 | AAG 2 1/2 -7 |
| 032744 | AAG 2 1/2 -8 |
| 032745 | AAG 2 1/2 -9 |
| 032746 | AAG 2 1/2 -10 |
| 032747 | AAG 2 1/2 -11 |
| 032748 | AAG 2 1/2 -12 |
| 032749 | AAG 2 1/2 -13 |
| 032750 | AAG 2 1/2 -14 |
| 032751 | AAG 2 1/2 -15 |
| 032752 | AAG 2 1/2 -16 |
| 032753 | AAG 2 1/2 -17 |
| 032754 | AAG 2 1/2 -18 |
| 032755 | AAG 2 1/2 -19 |
| 032756 | AAG 2 1/2 -20 |

| Product Code | AAG 3 |
|--------------|----------|
| 032757 | AAG 3-3 |
| 032758 | AAG 3-4 |
| 032759 | AAG 3-5 |
| 032760 | AAG 3-6 |
| 032761 | AAG 3-7 |
| 032762 | AAG 3-8 |
| 032763 | AAG 3-9 |
| 032764 | AAG 3-10 |
| 032765 | AAG 3-11 |
| 032766 | AAG 3-12 |
| 032767 | AAG 3-13 |
| 032768 | AAG 3-14 |
| 032769 | AAG 3-15 |
| 032770 | AAG 3-16 |
| 032771 | AAG 3-17 |
| 032772 | AAG 3-18 |
| 032773 | AAG 3-19 |

Each Pullman Stamp is handcrafted in the USA





Alpha-Numeral Stamp with Roman Style Font

| Product Code | AAR 0 |
|--------------|----------|
| 033081 | AAR 0-3 |
| 033082 | AAR 0-4 |
| 033083 | AAR 0-5 |
| 033084 | AAR 0-6 |
| 033085 | AAR 0-7 |
| 033086 | AAR 0-8 |
| 033087 | AAR 0-9 |
| 033088 | AAR 0-10 |
| 033089 | AAR 0-11 |
| 033090 | AAR 0-12 |
| 033091 | AAR 0-13 |
| 033092 | AAR 0-14 |
| 033093 | AAR 0-15 |
| 033094 | AAR 0-16 |
| 033095 | AAR 0-17 |
| 033096 | AAR 0-18 |
| 033097 | AAR 0-19 |
| 033098 | AAR 0-20 |
| 033099 | AAR 0-21 |
| 033100 | AAR 0-22 |
| Product Code | AAR 1 |
| 033101 | AAR 1-3 |
| 033102 | AAR 1-4 |
| 033103 | AAR 1-5 |
| 033104 | AAR 1-6 |
| 033105 | AAR 1-7 |
| 033106 | AAR 1-8 |
| 033107 | AAR 1-9 |
| 033108 | AAR 1-10 |
| 033109 | AAR 1-11 |
| 033110 | AAR 1-12 |
| 033111 | AAR 1-13 |
| 033112 | AAR 1-14 |
| 033113 | AAR 1-15 |
| 033114 | AAR 1-16 |
| 033115 | AAR 1-17 |
| 033116 | AAR 1-18 |
| 033117 | AAR 1-19 |
| 033118 | AAR 1-20 |
| 033119 | AAR 1-21 |
| 033120 | AAR 1-22 |



Each Pullman Stamp is handcrafted in the USA

| Product Code | AAR 2 |
|--------------|----------|
| 033121 | AAR 2-3 |
| 033122 | AAR 2-4 |
| 033123 | AAR 2-5 |
| 033124 | AAR 2-6 |
| 033125 | AAR 2-7 |
| 033126 | AAR 2-8 |
| 033127 | AAR 2-9 |
| 033128 | AAR 2-10 |
| 033129 | AAR 2-11 |
| 033130 | AAR 2-12 |
| 033131 | AAR 2-13 |
| 033132 | AAR 2-14 |
| 033133 | AAR 2-15 |
| 033134 | AAR 2-16 |
| 033135 | AAR 2-17 |
| 033136 | AAR 2-18 |
| 033137 | AAR 2-19 |
| 033138 | AAR 2-20 |

| Product Code | AAG 2 1/2 |
|--------------|---------------|
| 033139 | AAR 2 1/2 -3 |
| 033140 | AAR 2 1/2 -4 |
| 033141 | AAR 2 1/2 -5 |
| 033142 | AAR 2 1/2 -6 |
| 033143 | AAR 2 1/2 -7 |
| 033144 | AAR 2 1/2 -8 |
| 033145 | AAR 2 1/2 -9 |
| 033146 | AAR 2 1/2 -10 |
| 033147 | AAR 2 1/2 -11 |
| 033148 | AAR 2 1/2 -12 |
| 033149 | AAR 2 1/2 -13 |
| 033150 | AAR 2 1/2 -14 |
| 033151 | AAR 2 1/2 -15 |
| 033152 | AAR 2 1/2 -16 |
| 033153 | AAR 2 1/2 -17 |

Each Pullman Stamp is handcrafted in the USA





PULLMAN DATERS & NUMBERERS

| Product Code | AAG 3 |
|--------------|----------|
| 033155 | AAR 3-3 |
| 033156 | AAR 3-4 |
| 033157 | AAR 3-5 |
| 033158 | AAR 3-6 |
| 033159 | AAR 3-7 |
| 033160 | AAR 3-8 |
| 033161 | AAR 3-9 |
| 033162 | AAR 3-10 |
| 033163 | AAR 3-11 |
| 033164 | AAR 3-12 |
| 033165 | AAR 3-13 |
| 033166 | AAR 3-14 |
| 033167 | AAR 3-15 |

Pullman Long Ledger Frame Alphabet and Numbering Stamps

| date sizes available | #00 |
|--|--|
| number of alphabet bands (all alphabet bands also contain a dash (-) and a period (.) and are affixed to the date unless otherwise specified.) | -5 = 3 A-Z bands -6 = 4 A-Z bands -7 = 5 A-Z bands -8 = 6 A-Z bands |
| packaging | |



| | |
|------|------|
| A 1 | A 1 |
| B 2 | B 2 |
| C 3 | C 3 |
| D 4 | D 4 |
| E 5 | E 5 |
| F 6 | F 6 |
| G 7 | G 7 |
| H 8 | H 8 |
| I 9 | I 9 |
| J 0 | J 0 |
| K 1 | K 1 |
| L 2 | L 2 |
| M 3 | M 3 |
| N 4 | N 4 |
| O 5 | O 5 |
| P 6 | P 6 |
| Q 7 | Q 7 |
| R 8 | R 8 |
| S 9 | S 9 |
| T 0 | T 0 |
| U ¼ | U ¼ |
| V ½ | V ½ |
| W ¾ | W ¾ |
| X \$ | X \$ |
| Y ¢ | Y ¢ |
| Z . | Z . |
| - | - |
| X | X |

LFLAF 00-6

type of numberer size number of bands

LAG #00 LRA #00

| Product Code | Description |
|--------------|--------------------------------------|
| 035051 | LFLAF 00-4 (LAG Gothic or LRA Roman) |
| 035052 | LFLAF 00-5 (LAG Gothic or LRA Roman) |
| 035053 | LFLAF 00-6 (LAG Gothic or LRA Roman) |
| 035054 | LFLAF 00-7 (LAG Gothic or LRA Roman) |
| 035055 | LFLAF 00-8 (LAG Gothic Style Only) |



Each Pullman Stamp is handcrafted in the USA

Pullman XC Line Numberers *

| | |
|------------------------|--|
| number sizes available | #00, #0X, #0, #1, #2, #2 1/2, #3, #4, #5 |
| packaging | |
| XC = Gothic Style Font | |



BEEF

- Round Steak
- Swiss Steak
- Rolled Rump Roast
- Pot Roast
- Flank Steak
- Rump Roast
- Sirloin Steak
- Cube Steak
- Porterhouse Steak
- T-Bone Steak
- Club Steak
- Rolled Rib Roast
- Rib Roast
- Rib Steak
- Rib Boil
- Roast Beef
- Beef Short Ribs
- Chuck Roast
- Chuck Steak
- Neck Bone
- Hamburger
- Soup Bone
- Boiling Beef
- Beef Liver

PORK

- Pork Chops
- Pork Loin Roast
- Pork Tenderloin
- Back Bone
- Pork Shank
- Bacon
- Fresh Side Pork
- Spare Ribs
- Fresh Ham Steak
- Fresh Ham Roast
- Pork Shldr. Steak
- Pork Shldr. Roast
- Pork Steak
- Pork Roast
- Boston Butt
- Neck Bone
- Sausage
- Lard
- Pigs Feet
- Pork Liver
- Smoked Ham Steak
- Smoked Ham Roast
- Pig Head
- Link Sausage

No. 2 1/2 LS Locker Stamp

RIB ROAST

No. 3 LS Locker Stamp

RIB ROAST

| Product Code | Description |
|--------------|---|
| 035041 | # 2 1/2 LS - 24 Characters- Please specify Beef or Pork |
| 035042 | # 3 LS - 24 Characters - Please specify Beef or Pork |
| 033171 | Jr. Pork - 13 Characters |
| 033170 | Jr. Beef - 13 Characters |

If you don't see what you need, we might be able to make it!

Because the Pullman Line is manufactured in the USA, there are various options open to customers who need a special configuration. Some of the special modifications Cosco can make for your Pullman stamps are custom die plates, extended frames, tandem stamps, and offset brackets.

If there is an application that calls for a special stamp, call us for a quote.



Custom Die Plates



Extension Frames



Tandem Stamps



Offset Brackets

Each Pullman Stamp is handcrafted in the USA





PULLMAN BANDS

Individual Pullman Bands listed below. Buna rubber bands are available for use with industrial inks.

Please call for pricing.

| Product Code | PN (Roman) Letter Bands |
|--------------|-------------------------|
| 082550 | PN #00, A-M |
| 082551 | PN #00, N-Z |
| 082552 | PN #0, A-M |
| 082553 | PN #0, N-Z |
| 082554 | PN #1, A-M |
| 082555 | PN #1, N-Z |
| 082556 | PN #2, A-M |
| 082557 | PN #2, N-Z |

| Product Code | PN (Roman) Letter Bands |
|--------------|-------------------------|
| 082558 | PN-2 1/2 A-M |
| 082559 | PN-2 1/2 N-Z |
| 082560 | PN-3 A-M |
| 082561 | PN-3 N-Z |
| 082562 | PN-4 A-M |
| 082563 | PN-4 N-Z |
| 082564 | PN-5 A-M (OMIT I) |
| 082565 | PN-5 N-Z (OMIT O) |

| Product Code | BFPN (Roman) Figure Bands |
|--------------|---------------------------|
| 082325 | BFPN-2 Figure Band |
| 082326 | BFPN-3 Figure Band |
| 082327 | BFPN-4 Figure Band |
| 082989 | BFPN-5 Figure Band |
| 082329 | BFPN-6 Figure Band |
| 082926 | BFPN-1000 Figure Band |

| Product Code | PN (Roman) Figure Bands |
|--------------|-------------------------|
| 082331 | PN-00 Figure Band |
| 082332 | PN-0 Figure Band |
| 082333 | PN-1 Figure Band |
| 082334 | PN-2 Figure Band |
| 082335 | PN-2 1/2 Figure Band |
| 082336 | PN-3 Figure Band |
| 082337 | PN-4 Figure Band |
| 082338 | PN-5 Figure Band |

| Product Code | XCPN (Gothic) Figure Bands |
|--------------|----------------------------|
| 082900 | XCPN-00 Figure Band |
| 082901 | XCPN-0X Figure Band |
| 082902 | XCPN-0 Figure Band |
| 082903 | XCPN-1 Figure Band |
| 082904 | XCPN-2 Figure Band |
| 082905 | XCPN-2 1/2 Figure Band |
| 082906 | XCPN-3 Figure Band |
| 082907 | XCPN-4 Figure Band |
| 082908 | XCPN-5 Figure Band |
| 082339 | XCPN-600 Figure Band |
| 082330 | XCPN-1000 Figure Band |
| 082341 | XCPN-1200 Figure Band |

| Product Code | RA (Roman) Figure Bands |
|--------------|-------------------------|
| 083050 | RA-00 Figure Band |
| 083051 | RA-0 Figure Band |
| 083053 | RA-1 Figure Band |
| 083056 | RA-2 Figure Band |
| 083057 | RA-2 1/2 Figure Band |
| 083060 | RA-3 Figure Band |

| Product Code | AG (Gothic) Figure Bands |
|--------------|--------------------------|
| 082521 | AG-00 Figure Band |
| 082687 | AG-0X Figure Band |
| 082522 | AG-0 Figure Band |
| 082523 | AG-1 Figure Band |
| 082524 | AG-2 Figure Band |
| 082525 | AG-2 1/2 Figure Band |
| 082526 | AG-3 Figure Band |



Each Pullman Stamp is handcrafted in the USA

| Product Code | AAR (Roman) Alphanumeric Band |
|--------------|----------------------------------|
| 083044 | Band AAR-00 Alphanumeric |
| 083045 | Band AAR-0 Alphanumeric |
| 083046 | Band AAR-1 Alphanumeric |
| 083047 | AAR-2 Alphanumeric Band |
| 083048 | AAR-2 1/2 Alphanumeric Band |
| 083049 | AAR-3 Alphanumeric Band |

| Product Code | RA (Roman) Alphabet Bands |
|--------------|------------------------------|
| 082914 | RA-00 Alphabet Band |
| 082916 | RA-0 Alphabet Band |
| 083054 | RA-1 Alphabet Band |
| 083055 | RA-2 Alphabet Band |
| 083058 | RA-2 1/2 Alphabet Band |
| 083059 | RA-3 Alphabet Band |

| Product Code | AG (Gothic) Alphabet Bands |
|--------------|-------------------------------|
| 082501 | AG-00 Alphabet Band |
| 082502 | AG-0X Alphabet Band |
| 082503 | AG-0 Alphabet Band |
| 082504 | AG-1 Alphabet Band |
| 082505 | AG-2 Alphabet Band |
| 082506 | AG-2 1/2 Alphabet Band |
| 082507 | AG-3 Alphabet Band |

| Product Code | AAG (Gothic) Alphanumeric Band |
|--------------|-----------------------------------|
| 082451 | Band AAG-00 Alphanumeric |
| 083042 | Band AAG-0X Alphanumeric |
| 082452 | Band AAG-0 Alphanumeric |
| 082453 | Band AAG-1 Alphanumeric |
| 082454 | AAG-2 Alphanumeric Band |
| 082455 | AAG-2 1/2 Alphanumeric Band |
| 082456 | AAG-3 Alphanumeric Band |

| Product Code | XCPN (Gothic) Letter Bands |
|--------------|---------------------------------|
| 082566 | XCPN-00 A-M |
| 082567 | XCPN-00 N-Z |
| 082568 | XCPN-0X A-M |
| 082569 | XCPN-0X N-Z |
| 082570 | XCPN-0 A-M |
| 082571 | XCPN-0 N-Z |
| 082572 | XCPN-1 A-M |
| 082573 | XCPN-1 N-Z |
| 082574 | XCPN-2 A-M |
| 082575 | XCPN-2 N-Z |
| 082576 | XCPN 2-1/2 A-M |
| 082577 | XCPN 2-1/2 N-Z |
| 082578 | XCPN 3 A-M |
| 082579 | XCPN 3 N-Z |
| 082580 | XCPN 4 A-M |
| 082581 | XCPN 4 N-Z |
| 082582 | XCPN 5 A-M (Omit I) |
| 082583 | XCPN 5 N-Z (Omit O) |
| 082584 | XCPN 600 A-M (Omit I) |
| 082585 | XCPN 600 N-Z (Omit O) |
| 082586 | XCPN 1000 A-M (Omit I and J) |
| 082587 | XCPN 1000 N-Z (Omit Q and R) |
| 082588 | XCPN 1200 A-M OMIT I AND J |
| 082589 | XCPN 1200 N-Z (Omit Q and R) |

Each Pullman Stamp is handcrafted in the USA





| Product Code | Pullman Fraction Bands (Roman) |
|--------------|--------------------------------|
| 082361 | NO. 00 Fraction Band |
| 082362 | NO. 0 Fraction Band |
| 082363 | NO. 1 Fraction Band |
| 082364 | NO. 2 Fraction Band |
| 082365 | NO. 2 1/2 Fraction Band |
| 082366 | NO. 3 Fraction Band |
| 082367 | NO. 4 Fraction Band |
| 082368 | NO. 5 Fraction Band |

| Product Code | BFPD (Roman) Dater Bands |
|--------------|----------------------------|
| 082800 | BFPD-2 Dater Band |
| 083024 | BFPD-2 1/2 Dater Band |
| 083027 | BFPD-3 Dater Band |
| 082607 | BFPD-4 Dater Band |
| 082608 | BFPD-5 Dater Band |
| 082609 | BFPD-6 Dater Band |
| 082867 | BFPD-1000 Full Year |
| 082610 | BFPD-1000 Abbreviated Year |

| Product Code | PD (Roman) Figure Bands |
|--------------|-------------------------|
| 082601 | PD-0 Dater Band |
| 082596 | PD-1 Dater Band |
| 082600 | PD-1 1/2 Dater Band |
| 082604 | PD-2 Dater Band |
| 082605 | PD-2 1/2 Dater Band |
| 082606 | PD-3 Dater Band |

| Product Code | XCPD (Gothic) Dater Bands |
|--------------|---------------------------|
| 082611 | XCPD-00 Dater Band |
| 082812 | XCPD-0 Dater Band |
| 082813 | XCPD-1 Dater Band |
| 082837 | XCPD 1-1/2 Dater Band |
| 082811 | XCPD-2 Dater Band |
| 083011 | XCPD-2 1/2 Dater Band |
| 083015 | XCPD-3 Dater Band |

Industrial Stamp Pads in Metal Housing

| | |
|-----------------|-----------------------------|
| sizes available | 5 1/8" x 9" 7" x 11 1/8" |
| packaging | |

* Additional sizes are available.

These heavy duty stamp pads are ideal for use with industrial inks.



| Product Code | Description |
|--------------|--------------------------------------|
| 090453 | Stamp Pad in Metal Case 5 1/8" x 9" |
| 090456 | Stamp Pad in Metal Case 7" x 11 1/8" |



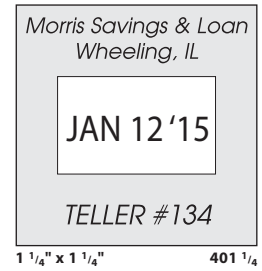
Each Pullman Stamp is handcrafted in the USA

| 401 1/4 | |
|-----------------|-----------------|
| impression area | 1 1/4" x 1 1/4" |
| height of date | # 1 1/2, 5/32" |
| packaging | 25 |

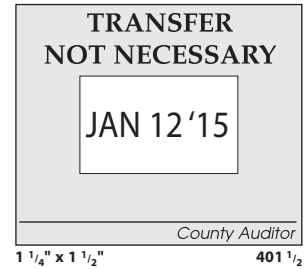
| 401 1/2 | |
|-----------------|-----------------|
| impression area | 1 1/4" x 1 1/2" |
| height of date | # 1 1/2, 5/32" |
| packaging | 25 |



401 1/4



| Product Code | Description |
|--------------|-------------------------|
| 010249 | 401 1/4 DIE PLATE DATER |
| 010250 | 401 1/2 DIE PLATE DATER |



| #0 Line Dater | |
|----------------|------------|
| height of date | # 0, 3/32" |
| packaging | 25 |

JAN 12 2015

| #1 Line Dater | |
|----------------|-----------|
| height of date | # 1, 1/8" |
| packaging | 24 |

JAN 12 2015



#1 1/2 Line Dater

| #1 1/2 Line Dater | |
|-------------------|----------------|
| height of date | # 1 1/2, 5/32" |
| packaging | 24 |

JAN 12 2015

| #2 Line Dater | |
|----------------|------------|
| height of date | # 2, 3/16" |
| packaging | 100 |

JAN 12 2015



#2 Line Dater

| Product Code | Description |
|--------------|-------------------|
| 012728 | #0 LINE DATER |
| 012729 | #1 LINE DATER |
| 012730 | #1 1/2 LINE DATER |
| 012731 | #2 LINE DATER |



| Dial-N-Stamp | |
|----------------------------|----------------|
| height of date/phrase band | # 1 1/2, 5/32" |
| packaging | |



RECEIVED JAN 12 2015

**ANSWERED V O I D
CANCELLED BILLED
PAID RECEIVED
SHIPPED DELIVERED
ENTERED FILED
COMPLETED APPROVED**

| Product Code | Description |
|--------------|------------------------------------|
| 010180 | Dial-N-Stamp - Date & Phrase Stamp |

| 0-6 | |
|-------------------|-----------|
| height of numbers | # 1, 1/8" |

1 2 3 4 5 6

| 0-8 | |
|-------------------|-----------|
| height of numbers | # 1, 1/8" |

1 2 3 4 5 6 7 8

| 1-6 | |
|-------------------|----------------|
| height of numbers | # 1 1/2, 5/32" |

1 2 3 4 5 6

| 1-8 | |
|-------------------|----------------|
| height of numbers | # 1 1/2, 5/32" |

1 2 3 4 5 6 7 8

| 2-6 | |
|-------------------|------------|
| height of numbers | # 2, 3/16" |

1 2 3 4 5 6

| 2-8 | |
|-------------------|------------|
| height of numbers | # 2, 3/16" |

1 2 3 4 5 6 7 8



1-8



2-8

| Product Code | Description |
|--------------|---|
| 016406 | #0-6 Band Line Numberer 1/8" Char. 6 Bands |
| 016407 | #0-8 Band Line Numberer 1/8" Char. 8 Bands |
| 016411 | #1-6 Band Line Numberer 5/32" Char. 6 Bands |
| 016412 | #1-8 Band Line Numberer 5/32" Char. 8 Bands |
| 016419 | #2-6 Band Line Numberer 3/16" Char. 6 Bands |
| 016420 | #2-8 Band Line Numberer 3/16" Char. 8 Bands |



Albany Die Plate Dater (Full Year)

| | |
|-----------------|--|
| impression area | No. 1 = 1 1/4" x 2" No. 2 = 1 1/2" x 2" No. 3 = 1 3/4" x 2 1/2" No. 4 = 2" x 2" No. 5 = 2" dia |
| height of date | # 1 1/2, 5/32" |
| packaging | |

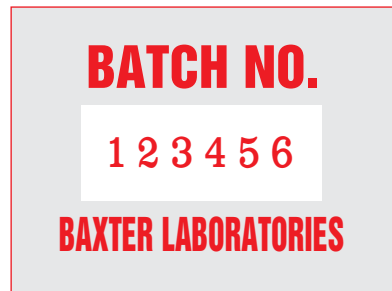


No. 4, 2" x 2"

| Product Code | Description |
|--------------|------------------------------|
| 012241 | NO. 1 Albany 1 1/4" X 2" |
| 012242 | NO. 2 Albany 1 1/2" X 2" |
| 012243 | NO. 3 Albany 1 3/4" X 2 1/2" |
| 012244 | NO. 4 Albany 2" X 2" |
| 012245 | NO. 5 Albany 2" Dia. |

Albany Die Plate Numberer

| | |
|-----------------|--|
| impression area | No. 1 = 1 1/4" x 2" No. 2 = 1 1/2" x 2" No. 3 = 1 1/2" x 2 1/2" No. 4 = 2" x 2" No. 5 = 2" dia |
| Type of figures | PN # 1 1/2, 5/32" |
| packaging | |



No. 2, 1 1/2" x 2"

| Product Code | Description |
|--------------|---|
| 012246 | NO. 1 Albany 6 Fig. Bands 1 1/4" x 2" |
| 012247 | NO. 2 Albany 6 Fig. Bands 1 1/2" x 2" |
| 012248 | NO. 3 Albany 6 Fig. Bands 1 1/2" x 2 1/2" |
| 012249 | NO. 4 Albany 6 Fig. Bands 2" x 2" |
| 012250 | NO. 5 Albany 6 Fig. Bands 2" Dia. |

Model S-50 Die Plate Dater

| | |
|-----------------|--|
| impression area | No. 1 = 1 5/16" x 2 1/16" No. 2 = 1 5/8" x 2 1/4" No. 3 = 1 1/2" x 2 1/2" No. 4 = 1 5/8" x 2 1/2" No. 7 = 1 7/8" x 2 5/8" No. 8 = 2 1/16" x 2 1/16" |
| height of date | # 1 1/2, 5/32" |
| packaging | |



RECEIVED

JUN 16 2013

NEWTON TRUST CO.

BY _____

No. 2, 1 5/8" x 2 1/4"

Product Code

Description

| | |
|--------|-----------------------------------|
| 012270 | NO. 1 S-50 1 5/16" X 2 1/16" |
| 012271 | NO. 2 S-50 1 5/8" X 2 1/4" |
| 012272 | NO. 3 S-50 1 1/2" X 2 1/2" |
| 012274 | NO. 4 S-50 1 5/8" X 2 1/2" (OVAL) |
| 012276 | NO. 7 S-50 1 7/8" X 2 5/8" |
| 012277 | NO. 8 S-50 2 1/16" X 2 1/16" |
| 012279 | MODEL S-50 w/o Die Plate |
| 012282 | MODEL S-50 No. 2 (Spanish Dates) |

Cleveland Die Plate Dater (Abbr. Year)

| | |
|-----------------|---|
| impression area | No. 401 1/8 = 1 1/4" x 1 1/8" No. 401 1/4 = 1 1/4" x 1 1/4" No. 401 1/2 = 1 1/4" x 1 1/2" No. 402 = 1 1/4" x 2" No. 402 1/2 = 1 1/4" x 2 1/2" |
| height of date | # 1 1/2, 5/32" |
| packaging | |



CASHIER

DEC 27 '13

BROADWAY-6
142

No. 401 1/8, 1 1/4" x 1 1/8"

CASH SALE

NEW YORK JUN 14 '13 NEW YORK
— 33 —

No. 401 1/4, 1 1/4" x 1 1/4"

Cleveland Double Dater (Abbr. Year)

| | |
|-----------------|--|
| impression area | DC 402 1/4 Jr. = 1 1/4" x 2 1/4" DC 402 3/4 = 1 1/4" x 2 3/4" |
| height of date | # 1 1/2, 5/32" |
| packaging | |

PAID

JUN 14 '13

DETROIT EDISON CO.
BRANCH 18

PAID

JUN 14 '13

DETROIT EDISON CO.
BRANCH 18

DC 402 3/4, 1 1/4" x 2 3/4"

Product Code

Description

| | |
|--------|-------------|
| 012391 | NO. 401 1/8 |
| 012392 | NO. 401 1/4 |
| 012393 | NO. 401 1/2 |
| 012395 | NO. 402 |
| 012396 | NO. 402 1/2 |

Product Code

Description

| | |
|--------|---------------|
| 012411 | DC 402 1/4 JR |
| 012412 | DC 402 3/4 |

Supreme No. 2 Die Plate Dater

| | |
|-----------------|---------------------|
| impression area | No. 2 = 1 1/2" x 2" |
| height of date | # 1 1/2, 5/32" |
| packaging | |

Supreme No. 5 Dial Time Stamp

| | |
|----------------|----------------|
| height of date | # 1 1/2, 5/32" |
| packaging | |



No. 2, 1 1/2" x 2"



No. 5, 12 Hour Dial, 2" dia .

| Product Code | Description |
|--------------|-------------|
|--------------|-------------|

012203 NO. 2 SUPREME 1 1/2" X 2"

| Product Code | Description |
|--------------|-------------|
|--------------|-------------|

016201 NO. 5 5-12 HOUR DIAL

016202 NO. 5 5-24 HOUR DIAL

Brooklyn Dater w/single bridge

| | |
|--|--|
| available bridge impression lengths (bridge height is 5/16") | 1", 1 1/8", 1 1/4", 1 1/2", 1 3/4", 2", 2 1/4", 2 1/2", 2 3/4", and 3" |
| height of date | # 1 1/2, 5/32" |
| packaging | |



C.O.D. SHIPMENT

SEP 14 2013

BRC 1 1/2 x 1 1/2"

| Product Code | Description |
|--------------|-------------|
|--------------|-------------|

012432 BRC NO. 1 X 1"

012433 BRC NO. 1 1/2 X 1 1/8"

012466 BRC NO. 1 1/2 X 1 1/4"

012470 BRC NO. 1 1/2 X 1 1/2"

012474 BRC NO. 1 1/2 X 1 3/4"

012476 BRC NO. 1 1/2 X 2"

012478 BRC NO. 1 1/2 X 2 1/4"

012480 BRC NO. 1 1/2 X 2 1/2"

012482 BRC NO. 1 1/2 X 2 3/4"

012484 BRC NO. 1 1/2 X 3"

Brooklyn Dater w/dual bridges

| | |
|---|--|
| available bridge impression lengths (bridge height is 5/16") | 1", 1 1/8", 1 1/4", 1 1/2" 1 3/4", 2", 2 1/4", 2 1/2" 2 3/4", and 3" |
| height of date | PD #1 and PD #1 1/2 |
| packaging | |



REBATE CHECK

MAY 23 2013

Amount _____
 Check No _____
 BPD 1 1/2 x 1 1/2"

| Product Code | Description |
|--------------|------------------------|
| 012422 | BPD NO. 1 X 1" |
| 012425 | BPD NO. 1 X 1 1/2" |
| 012423 | BPD NO. 1 1/2 X 1 1/8" |
| 012467 | BPD NO. 1 1/2 X 1 1/4" |
| 012471 | BPD NO. 1 1/2 X 1 1/2" |
| 012475 | BPD NO. 1 1/2 X 1 3/4" |
| 012477 | BPD NO. 1 1/2 X 2" |
| 012479 | BPD NO. 1 1/2 X 2 1/4" |
| 012481 | BPD NO. 1 1/2 X 2 1/2" |
| 012483 | BPD NO. 1 1/2 X 2 3/4" |
| 012485 | BPD NO. 1 1/2 X 3" |

Brooklyn Federal Tax Deposit Dater

| | |
|---|-------------|
| available bridge impression lengths (bridge height is 5/16") | 3/4" and 2" |
| height of date | XCPD #0 |
| packaging | |



Pacific National Bank
 Los Angeles, CA
 Main

SEP 12 '14
 Tax Deposit Dater

Mid-City National Bank
 Los Angeles, CA
 #374

SEP 12 '14

Mid-City National Bank
 Chicago, Illinois
 #374

SEP 12 '14

Double Tax Deposit Dater

| Product Code | Description |
|--------------|--------------------------|
| 012445 | Single Tax Deposit Dater |
| 012446 | Double Tax Deposit Dater |



MSM Marking Devices
www.MSMMarkingDevices.com
Orders@MSMMarking.com

7724 Burnet Avenue
Van Nuys, California 91405
(800) 820-5014 or (818) 787-3308
Fax: (818) 787-2740